

PREVAIL

Adhesives & Accessories **by METROFLOR™**

Product Catalog

Revised 11/30/2023

Note: This document supersedes all
previously distributed Prevail by Metroflor.



TABLE OF CONTENTS

Prevail Product Catalog

ADHESIVES

2

Most Prevail adhesives are FloorScore certified and can contribute to both WELL Building Standard v2 as LEED v4.0/v4.1 credits. For more information contact Metroflor Customer Service.

CLEANERS & FINISHES

4

Keep both residential and commercial floors looking their best when you select from the full line of cleaners and finishes by Prevail.

INSTALLATION ACCESSORIES

5

Installation is fast and easy using Metroflor recommended accessories by Prevail.

UNDERLAYMENT

6

Whether for use as a moisture vapor barrier, for sound reduction, or in double glue-down installations, Prevail has the right underlayment for the job.

ATTRAXION INSTALLATION ACCESSORIES

7

Complete your Attraxion installation system with MagneBuild™ Attraxion underlayment and tape. Use only recommended accessories to ensure a successful Attraxion installation.

ADHESIVES

Prevail 30-GS Adhesive



Item Number: PR-30-GS

Prevail 30-GS combines excellent bond capabilities with the ease of a quick-dry formula. Ideal for repairs, replacements and reinforcements.

Product Size/Pkg: 1 oz bottles

Spread Rate: 40-50 linear feet when applied in a bead up to ¼" wide

Roller Recommendation: Hand roller

Freeze/Thaw Stability: Protect from freezing

Product Shelf Life: 1 year

Product Compatibility: Engage, Inception, Genesis, Metrostone



WARNING: This product can expose you to chemicals including Methanol, which is known to the State of California to cause developmental issues. For more information, go to www.P65Warnings.ca.gov.



WARNING: This product can expose you to chemicals including Tetrahydrofuran, which is known to the State of California to cause cancer. For more information, go to www.P65Warnings.ca.gov.

Prevail 3500 Wet Set Adhesive



Item Numbers:
PR-3500-1G (1 Gallon)
PR-3500-4G (4 Gallon)

A solvent-free, water-based acrylic adhesive for installing luxury vinyl tile and plank. Prevail 3500 provides an exceptional wet-set bond over a variety of approved porous and non-porous substrates.

Product Size/Pkg: 1 gallon & 4 gallon pails

Porous Substrates: ½" x ½" x ½" Square-notch trowel=125-150 sq. ft./gal

Non-Porous Substrates: ½" x ½" x ½" V-notch trowel=165-200 sq. ft./gal

Roller Recommendation: 100 lb 3-section roller

Freeze/Thaw Stability: Protect from freezing

Product Shelf Life: 1 year

Product Compatibility: Metroflor LVT, Artistek

Prevail 4000™ Two Part Epoxy



Item Number: PR-4000

Designed for installing luxury vinyl tile and plank over well-prepared porous and non-porous substrates. Prevail 4000 is excellent for use in healthcare facilities and commercial installations where heavy fixtures or rolling stock will be used.

Product Size/Pkg: 1 gallon units

Trowel & Coverage for Porous & Non-Porous Substrates:

½" x ½" x ½" Square-notch trowel=125-150 sq. ft./gal

Roller Recommendation: 100 lb 3-section roller

Freeze/Thaw Stability: Protect from freezing

Product Shelf Life: 1 year

Product Compatibility: Metroflor LVT, Artistek



WARNING: This product can expose you to chemicals including Epichlorohydrin, which is known to the State of California to cause developmental issues in males and to cause cancer. For more information, go to www.P65Warnings.ca.gov.

ADHESIVES

Prevail 6000 Pressure Sensitive Vinyl Adhesive



Item Numbers:
PR-6000-1G (1 Gallon)
PR-6000-4G (4 Gallon)

Designed for installing luxury vinyl tile and plank over well-prepared approved substrates with moisture readings as high as 90% RH. Prevail 6000 extends drying time up to two hours, allowing trouble-free installation.

Product Size/Pkg: 1 gallon & 4 gallon pails

Trowel and Coverage for Porous Substrates:

$\frac{1}{16}$ "x $\frac{1}{16}$ " x $\frac{1}{16}$ " Square-notch trowel= 160-180 sq. ft./gal

Trowel and Coverage for Non-Porous Substrates:

$\frac{1}{16}$ "x $\frac{1}{32}$ " x $\frac{1}{32}$ " U-notch trowel =220-260 sq. ft./gal

Roller Recommendations: 100 lb 3-section roller

Freeze/Thaw Stability: Protect from freezing

Product Shelf Life: 2 years

Product Compatibility: Metroflor LVT, Artistek



WARNING: This product can expose you to chemicals including 1,4-Dioxane, which is known to the State of California to cause cancer. For more information, go to www.P65Warnings.ca.gov.



WARNING: This product can expose you to chemicals including Ethyl acrylate, which is known to the State of California to cause cancer. For more information, go to www.P65Warnings.ca.gov.

Prevail Product	PR-30-GS	PR-3500	PR-4000	PR-6000
Adhesive Type	Cyanoacrylate	Wet Set	2-Part Epoxy	PSA
Usage	Repair Adhesive	LVT	LVT	LVT
pH Tolerance	N/A	7-10	7-10	7-10
ATSM F2170 - RH Limits	N/A	85%	90%	90%
ATSM F1869 - MVER	N/A	6lbs	8lbs	8lbs
Spread Rate And Trowel (Porous)	40 linear feet per tube	125-150 sq.ft./gal $\frac{1}{16}$ "x $\frac{1}{16}$ " x $\frac{1}{16}$ " Square-notch	125-150 sq.ft./gal $\frac{1}{16}$ "x $\frac{1}{16}$ " x $\frac{1}{16}$ " Square-notch	160-180 sq.ft./gal $\frac{1}{16}$ "x $\frac{1}{16}$ " x $\frac{1}{16}$ " Square-notch
Spread Rate And Trowel (Non-Porous)	40 linear feet per tube	165-200 sq.ft./gal $\frac{1}{16}$ "x $\frac{1}{16}$ " x $\frac{1}{16}$ " V-notch	125-150 sq.ft./gal $\frac{1}{16}$ "x $\frac{1}{16}$ " x $\frac{1}{16}$ " Sq-notch	220-260 sq.ft./gal $\frac{1}{16}$ "x $\frac{1}{32}$ " x $\frac{1}{32}$ " U-notch
Shelf Life (In Unopened Properly Stored Containers)	1 year	1 year	1 year	1 year
LEED Qualified	No	Yes	Yes	Yes
Floorscore Certified	No	Yes	Yes	Yes

CLEANERS

Prevail 1-Step Neutral Cleaner (Concentrate)



Item Numbers:
PR-VICL-QT (1 Quart)
PR-VICL-GL (1 Gallon)

Versatile Prevail 1-Step Neutral Cleaner combines excellent cleaning capabilities with the ease of a no-rinse formula when applied with a damp mop for everyday soil. For heavy soil and commercial applications that require scrubbing, rinse while wet or allow to dry to a film and buff. Prevail 1-Step Neutral Cleaner will never harm the floor's finish.

Product Size/Pkg: 1 quart & 1 gallon bottles

Freeze/Thaw Stability: Protect from freezing

Product Shelf Life: 1 year

Product Compatibility: Suitable for use on all luxury resilient tile and plank by Metroflor

Prevail Ready-to-Use Neutral Cleaner



Item Number: PR-RTU-16

Prevail Ready-To-Use (RTU) Neutral Cleaner combines excellent cleaning capabilities with the convenience of a no-rinse, spray-on formula. Prevail RTU Neutral Cleaner will never harm the floor's finish or leave a dulling film behind.

Product Size/Pkg: 16 oz. spray bottle

Freeze/Thaw Stability: Protect from freezing

Product Shelf Life: 1 year

Product Compatibility: Suitable for use on all luxury resilient tile and plank by Metroflor

Prevail Scratch Remover



Item Number: PR-KSR-16

Prevail Scratch Remover improves the appearance of surface scratches and minor scuffs almost instantly. Conceal and reduce the appearance of fine particle abrasion, micro hazing and minor surface scratches in small areas under furniture, near entrances and other high traffic areas quickly and easily.

Product Size/Pkg: 16 oz. spray bottle

Freeze/Thaw Stability: Protect from freezing

Product Shelf Life: 1 year

Product Compatibility: Suitable for use on all luxury resilient tile and plank by Metroflor

INSTALLATION ACCESSORIES

Prevail Hand Roller



Item Number:
PR-Grip-StripRoller

Use this single wheel adjustable hand-roller during installation helps to ensure all products by Metroflor Corp. are properly bonded.

Prevail Tapping Block



Item Number: PR-TPBK

The specially contoured edge of this durable tapping block prevents damage to floating, locking LVT during installation.

Product Compatibility: Engage, Inception, Genesis, Metrostone

UNDERLAYMENT

Prevail Moisture Vapor Barrier



Item Number:
PR-PMVB (300 sf)

Prevail Moisture Vapor Barrier is a 100% virgin resin, non-slip 6 mil polyethylene film. Required for use as a moisture vapor barrier over all concrete substrates within recommended moisture tolerances. Not for use over wood substrates.

Product Size/Pkg: 6' x 50' (300 sq. ft.) rolls

Water Vapor Transmission: 0.19g/ 100in²/ 24hrs at 100°F with 100% RH

Color: Colorless translucent

Thickness: 6mil

Overlap Length: 8"

Application Method: Floating only

Product Compatibility: Inception, Metrostone, Genesis, and Engage

Prevail GDP



Item Number: PR-GDP

Prevail GDP Glue Down Pad is a closed-cell polypropylene foam underlayment used for double-glue-down applications of luxury vinyl tile and plank over concrete and plywood substrates. This lightweight, moisture-resistant material meets industry standards for sound-reduction critical for multi-level builds.

Product Size/Pkg: 5' x 40' (200 sq. ft.) rolls

Compression Deflection/Density: 25% = 25.9 psi / 50% = 29.5 psi

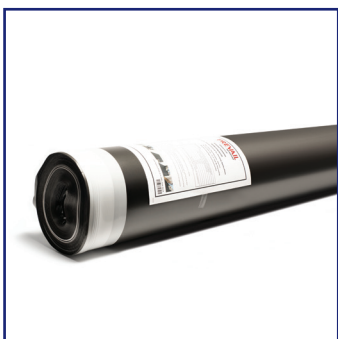
Color: Black

Thickness: 1mm

Certificates: FloorScore

Product Compatibility: Metroflor LVT, Artistek

Prevail Floating Floor Underlayment*



Item Number: PR-USSU-200

*to be discontinued

Prevail Floating Floor Underlayment is a closed cell foam underlayment that provides excellent sound reduction under solid clic LVT by Metroflor Corp. This underlayment is ideal for multi-level installations. The dense foam design provides moisture protection and resists mold and mildew, while the 3" flap effectively seals out moisture and easily attaches to the adhesive strip.

Product Size/Pkg: 5' x 40' (200 sq. ft.) rolls

Color: Black

Overlap Length: 3"

Thickness: 1mm

Application Method: Floating only

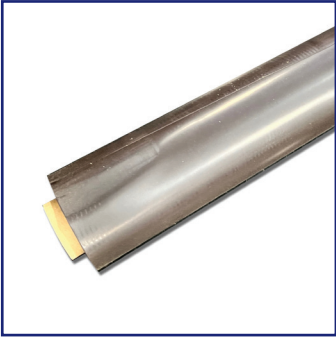
Certificates: FloorScore

Product Compatibility: Engage

ATTRAXION

Flexible Magnetic LVT by METROFLOR™

MagneBuild Underlayment



Item Number: MBU4036P33.3

MagneBuild Magnetic Underlayment comes in 100 sq/ft per roll. It has a 1.0 mm thickness and measures 3' W x 3.33' L. It is compatible with Metroflor's Attraxion magnetic flooring. Rolls can be cut using a basic utility knife. This underlayment is easy to install and cost-effective.

Product Size/Pkg: 3' x 33.3' (100 Sq. Ft.) rolls

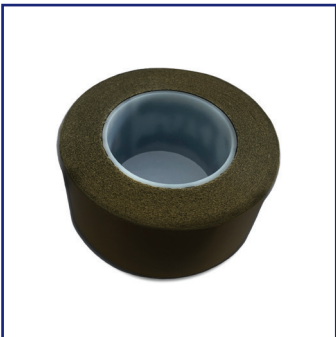
Color: Black

Overlap Length: 3"

Thickness: 1.0 mm

Product Compatibility: Attraxion , Metroforms

MagneBuild Underlayment Seam Tape



Item Number: HDBPVCT-RL

MagneBuild Underlayment Seam Tape is used to seam sections of the MagneBuild Magnetic Underlayment together to create a moisture barrier over substrates with and RH of up to 99%.

Product Size/Pkg: 4" x 100 linear feet rolls



WHAT YOU STAND ON IS WHAT WE STAND FOR

PREVAIL

Adhesives & Accessories **by METROFLOR™**

Metroflor Corporation
15 Oakwood Ave.
Norwalk, CT 06850
888-235-6672

www.metroflor.com

© 2023 Metroflor Corp